

KILMERSDON PARISH NEWS



MARCH/APRIL 2022



Kilmersdon Wassail

Morris Men parade with the Wassail Queen

We have found that there are still a great many people very anxious about covid despite two vaccinations and a booster so although we wanted to have an 'open' Wassail we did not expect many people would attend..... How wrong we were ! Amazingly, 125 people and four dogs were in attendance this year. Some visitors we know came from London to see their first Wassail. All the Wassailers were asked to form a large circle around one of the trees. Our Wassail Queen this year was Bella Whitelaw-Jones and she was brilliant ! The Village Band led us to the Community Orchard where Martin Horler explained a very short history of Wassail and then Crowned Bella as the 2022 Kilmersdon Wassail Queen. Bella firstly placed a piece of toast in the apple tree for Robin Goodfellow, the good spirit of the orchard, she

then poured cider around the base of the tree giving back some of what it gave us last year. Following this all the Wassailers sang the Wassail Song which was written especially for Kilmersdon by Mike Clay many years ago, everyone then said the incantation "Here's to thee old apple tree" etc, etc and on the last 'Hurrah' four shot guns were fired up through the branches of the tree to frighten away the evil spirits from the orchard and to wake up the trees for another season. This should be followed by the Wassail Queen drinking from the Wassail Mug the Wassail Cup which is hot cider with sugar, spices and laced with brandy. She should pass the Wassail Mug around the circle but because of Covid the Wassail Cup was put into small paper cups and handed around on a tray to all the assembled crowd. Cam Valley Morrismen added

*The Wassail Group**Burning the ashen faggot*

colour to the occasion and then danced a few dances. Headed by the Wassail Queen and the Village Band everyone then processed back up the lane to The Old School House where the ceremony was performed all over again.

After the Wassailing the Ashen Faggot was to be ceremoniously burnt. The first thing was to find the oldest man in the entire company which was Alban Buntin of Gurney Slade. Martin explained about the ashen faggot, these were used to heat up bread ovens to bake bread, it's made of ash because this is 'the tree of life'. It has nine hazel bonds around it and any maidens within the Parish can choose a bond, whoever chose the first bond to burn through and spring open, that maiden will marry within the year! The Wassail Queen carries the ashen faggot around the circle of Wassailers and finally hands it to Alban who says a short speech wishing good health and everlasting protection to the master and mistress of this house, he then places the faggot on the fire. Before it has burnt away one piece of the ashen faggot is removed from the fire and this is saved and goes into next years' ashen faggot.

*Firing through the branches*

The final part of the event is a tray of apple cake is handed around to everyone, although we were caught out with the numbers, thanks to Frances, there was enough apple cake to go around. Next years' Wassail will be Saturday 14th January 2023 See you there !

Martin Horler

NOTE FROM THE EDITORS

With so many woes surrounding us at home and abroad, it is gratifying to know that our spirits are to be lifted by local events being planned for the Queen's Platinum Jubilee in June.

So let's get behind making the celebrations a success and, along the way, build up community camaraderie with our near neighbours in Holcombe and Coleford.

The hunt is on for more residents to join the Parish Council so if you have Kilmersdon's well being at heart please apply for a place in April's Parish Council elections (**see election information on page 5**)

Again, thank you to all those who have contributed to make this issue another bumper one. The deadline for articles, pictures and adverts for the May/June issue is April 20th and please try to keep your copy to around 350 words.

Enjoy putting the clocks forward on March 29th, and to the forthcoming Spring sunshine and nature's re-awakening.

Warmest wishes from Sue & Penny.

Sue & Penny

Queen's Platinum Jubilee plans

Please make a note of these dates in your diaries! Plans are underway for Kilmersdon to celebrate the Queen's Platinum Jubilee after villagers enthusiastically put forward ideas at a recent meeting organised by the Parish Council in the Village Hall.

Holcombe and Coleford are well ahead with their own Jubilee events, and it is hoped that, by promoting and sharing with Kilmersdon what they have planned, a good inter village community spirit will be built up.

Here is what has so far been agreed by parish councillors and individual Kilmersdon parishioners:-

Thursday June 3rd - the lighting of a beacon (see Beacon Club article on page 4) and a proposed organised ramble with neighbours in Holcombe and Coleford.

Friday June 4th - a Ceilidh with a band and bar in the Village Hall

Sunday June 6th - an Open Picnic in the Village playing field with teas and coffees etc from the Village Hall.

Kilmersdon Art Group is to decorate the Village Hall with Royal themed art work and the village's hanging baskets will hopefully be filled with red, white and blue flowers and foliage.

A committee will be meeting soon to organise the events for which volunteers will be needed. If you can help, please contact Cllr Neil Brand on 07771934377; Email: nbrand84@me.com

The copy date for the next issue is April 20th. Please restrict articles to 350 words and notices to 100 words. Items for inclusion to be sent by email to: kilmersdonnews@gmail.com - We reserve the right to edit any item submitted.



100 years young!

On Tuesday 1 February, Mrs Dorothy Whalley of Newbury reached the wonderful age of 100. Here she is on the day with Clarissa and the wonderful card she received from the Queen, duly framed.

**DON'T FORGET ABOUT PUB
SKITTLES
EVERY 3RD FRIDAY OF
EVERY MONTH AT 7.30PM.**



Kilmersdon Beacon Club

As part of the Platinum Celebrations, Beacons will be lit throughout the **Nation at 9.45 p.m. on Thursday 2nd June** and Kilmersdon will be joining in. The beacon, however, has to be paid for and so to this end we are going to run the **'Kilmersdon Beacon Club'**. It is basically like a 100 club but will only run for three months – April, May & June. We are asking for £10 per number, you can have as many numbers as you want. The draw will take place in the Jolliffe Arms each month, for April and May the prizes will be 1st £50, 2nd £20, 3rd £10. The draw in June which will hopefully be 2nd the night of the beacon, there will be one prize only, the star prize is what ever is left in the kitty. This can, of course, only work if there is enthusiastic participation by everyone in the Parish, which we sincerely hope there will be. Frances and I will be coming around the village to collect your entry and allocate your number, remember this is not restricted to Kilmersdon residents, you can purchase numbers on behalf of anyone else (or your dog, your cat, the budgie, Eric the goldfish) **COME ON KILMERSDON LET'S GO FOR IT !!!!!**

Martin Horler



Hugh's Views on ...

Les Vins de la Loire.

The furthest West and close to the mouth of the river is "Neptunes Vineyard" namely **Muscadet**, the grape not the zone, the Melon de Bourgogne. Fresh, soft, slightly salty and refreshing the wine should be drunk early and is bottled in March or April. The Muscadet de Sèvre et Maine is generally good. A harvest produces some 40 million bottles and takes place in September. Gros Plant is a rougher cousin.

Anjou is our second wine. The region is renowned for Rosé and the white wines vary. There are fabulous dessert wines made from grapes with "pourriture noble", noble rot and they take years to develop fully. Other whites are at their best when not too acid, but crisply sweet. The grape is Chenin Blanc, the "Pineau de la Loire". Saumur produces a sparkling wine which can be excellent. Chicken, Duck, Goose and Pork are the perfect accompaniments, preferably not simultaneously!

Now for **Vouvray**. The vineyards are in the central area close to Tours. The grape is Chenin Blanc. The zone is full of caves, ideal for cellarage. The finest wines are honey sweet and mature well in the bottle. The wine should be served chilled and salad, smoked fish and oriental dishes are perfect bedfellows for the gourmets and gourmands!

Now for **Sancerre**. The Zone is to the East, the grape Sauvignon Blanc. The wine can be too sharp in a year lacking sun, but the finest wines are powerful and flinty. The wine is smoky, slightly green and spicy. Serve chilled. Ideal with fish or white meats.

Finally we have **Pouilly Fumé** from the extreme East of the valley around the village Pouilly-sur-Loire. Made exclusively from Sauvignon grapes the wine matures quickly and is highly prized. The vineyard is small and only 15 km from Sancerre.

My wine of the month is the **Calvet Muscadet Les Grézillières** now at Sainsburys at £5.99- no aristocrat but excellent value.

Hugh Pountney

Kilmersdon Defibrillators

In 2017 enough money, approximately £2000 per defibrillator, was raised by parishioners and local businesses in order to pay for the installation of two defibrillators in the village. One of these is located outside Norton Garden Machinery and the other outside the school, but is accessible to the public. The money was raised with the help of Kilmersdon residents, local organisations and businesses, for which we are very grateful.

Thanks also go to the Parish Council for i) including the defibrillator in the village centre on their insurance, ii) paying for the maintenance of the equipment and iii) paying for CPR training for any local residents who wish to attend courses.

If anyone is interested in training, please contact Ken Hutton on 01761 436193 or 07801 438137.

We aim to run training and refresher courses every 6 months. We also complete regular safety checks of the defibrillator boxes and report this to the national defibrillator network.

Below are some of the terms used in relation to these defibrillators:

CARDIOPULMONARY RESUSCITATION (CPR)

This term embraces all the procedures, from basic first aid to the most advanced medical interventions that can be used to restore the breathing and circulation in someone who's heart and/or breathing have stopped.

SUDDEN CARDIAC ARREST (SCA)

When the heart stops beating suddenly and unexpectedly – without warning.

SCA FACTS:

Worldwide, 7 million people die each year through SCA • SCA is unpredictable, striking without warning and killing approx. 250 people each day in the UK • SCA kills more people than lung cancer, breast cancer and AIDs combined • SCA doesn't discriminate – it can happen to the young, fit, or the elderly – anyone, anywhere, at any time! Some famous people who have suffered from SCA include:

- Fabrice Muamba (footballer)
- Bernhard Gallacher (golfer)



- Sir Ranulph Fiennes (explorer)
- Christian Eriksen (footballer)

Sadly many famous people have died of SCA, including:

- Michael Jackson
- Brittany Murphy
- Mother Theresa
- James Stuart
- Tony Curtis
- Christopher Reeve

Together with effective CPR, defibrillation is the only way to re-establish the heart's natural rhythm.

Ken Hutton

Could you be a Councillor?

With a number of Parish Councillors standing down in April the Parish Council is hoping that local people will consider standing for election in May.

There are meetings on the third Monday of each month and the time a councillor gives beyond that is very much down to them. If you would like to know more about the role please email the Parish Clerk, Lesley Close – **clerk@kilmersdonparishcouncil.co.uk** or phone **07521 951471**.

Nomination packs include forms and guidance and can be downloaded at <https://www.mendip.gov.uk/article/10641/Elections-2022>. Or contact Lesley for a paper copy.

Nomination papers must be hand delivered and can be accepted at the District Council's Offices, Cannards Grave Road, Shepton Mallet, BA4 5BT between 9.30am and 4.30pm on any working day from Tuesday 22 March, and no later than 4.00pm on Tuesday 5 April 2022.

People Nominated for each parish/ward will be published on the District Council's website by 4.00pm on Wednesday 6 April.

Move the Mind



We have had an exciting few months at Move the Mind. We bought two Vallis Black Nose lambs called Ant and Dec, who are adorable, cuddly and cute. We have been lead training them so that children can take them for walks and they follow everyone around and try to sit on laps if anyone is sitting on the floor!

After 11 long months we have now become a registered charity and our title will now be Move the Mind Foundation CIO, which should help us get more funding for items we need and the work that is carried out on the farm.

We will be celebrating our 5th anniversary in July so plan a family open day... details for this will follow.

As always, we are looking for volunteers to help at the farm. Please contact me, Nicole Gillard on 07483221030 if you feel you can help. There is also more information on our website www.MoveTheMind.net



Kilmersdon Art Group

Internationally acclaimed artist Jane Brayne recently gave a days's workshop in water colour and mixed media to members of Kilmersdon Art Group that meets at the Village Hall.

For many years Jane was an archaeological illustrator of ancient landscapes, people and objects and her work has been widely published, especially by The National Trust, English Heritage, the British Museum and the BBC where she was series illustrator of BBC TV's "Meet the Ancestors" programme.

Using many aspects of water colour, interspersed with pastels, acrylics and ink applied with wooden pens and sticks, Jane guided members through their individual interpretation of beech trees with their autumnal coloured leaves, and other work using varying artistic techniques.



Protecting Our Local Assets

Kilmersdon Parish Council has been invited by the SW Heritage Trust to nominate local buildings, sites and structures that villagers regard as important and in need of protection. More information about what this might involve is on the Kilmersdon Parish Council website.

www.kilmersdonpc.co.uk

If you have any thoughts about local assets which should be nominated, please contact Kilmersdon Parish Council clerk Lesley Close on clerk@kilmersdonpc.co.uk



Kilmersdon WI

For our meeting on **March 10th**, we are delighted that Martin Horler has accepted our invitation to come and talk to us about "What's so interesting about Kilmersdon". This is an open meeting and the Kilmersdon Community is welcome to come and join us. A small entrance charge will be made, there will be a raffle and light refreshments will be available after Martin's talk. The hall will be open from 7.15 and Martin's talk will commence at 7.30. Please will you take the time to familiarise yourself with the hall booking conditions with regard to Covid precautions. Hope to see you there.

April 7th brings our AGM meeting when we elect our committee for the next 12 months. Following the formalities we will enjoy a social occasion together.

Visitors will always be welcome to come along and join us for a meeting. Have a look at our Kilmersdon Facebook page Kilmersdon WI | Facebook to see what we are planning and our national website for everything you need to know about getting the most out of the WI membership Welcome to My WI - My WI (thewi.org.uk).

President - Julie Roberts
01373 834451 Bertrose@hotmail.co.uk

Secretary - Julia Neesam
01373 812686 kilmersdonwi@gmail.com

Treasurer - Dee Penny
01761 415023 dee@twopenys.co.uk



Due to Covid restrictions we are only allowing Members to attend films. Membership for the last two films of the Season is £5 (please see our website for trailers www.reelpeople.org.uk and for membership forms or come along on the night and join) Doors open at **7.15pm with film starting at 8pm.**

Take care and best wishes from your reel people committee. reelpeoplefilms@outlook.com
Sanitiser is provided in the Hall and we ask that you please use this on arrival. We would

If readers would like to receive their parish news online, please contact Penny on 01761 435193 or Sue on 01761 437855

also be grateful if you would wear a face covering when not sitting down.

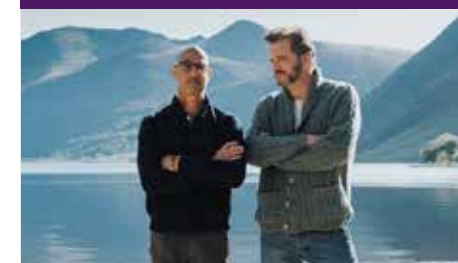
Unfortunately, we will not be providing a bar. You are welcome to bring your own refreshments, but please take your empties away with you.

Friday 18th March 2022: HONEYLAND (12)
89 mins. Subtitled (plus AGM)



This documentary follows Hatidze, who uses traditional skills to harvest wild honey. Her lifestyle is threatened by new neighbours who also harvest honey but by extortionate means, in painful contrast with Hatidze's approach. There is hope when one boy recognises the value of what she does and seeks to learn more.

Friday 8th April 2022:
SUPERNOVA (15) 95 mins



Colin Firth and Stanley Tucci are longstanding lovers who together, on a scenic and sentimental road trip in an ageing but much-loved campervan, confront their fears as dementia enters their relationship. Great cinematography and touching observations.

Our buses are under threat

April 2022 was meant to augur in a new era for our buses. It was the month when the £3 billion as part of Bus Back Better, National Strategy for Buses for England, could be used to improve bus services. People could be invited to abandon their cars and opt for the 'greener' option of going by bus on journeys to nearby towns and villages.

To improve buses across the county, Somerset had put in a bid for £163 million of Bus Back Better money. That was the sum of money Somerset needed because Somerset bus services currently are the worst rated of any county in England. But the Bus Back Better fund has been over subscribed 8 times by all the bids from across England and so it's unknown how much money Somerset might get. But it's unlikely to get anything like what Somerset needs.

The 2 years of Covid with endless warnings not to use buses has seen bus passenger numbers down 40% on pre Covid levels. This has meant the Government has had to step in and subsidise bus services in order to keep them running. To fund this the Government has diverted more than half of the £3 billion pot allocated for transforming our bus services to just maintain our current bus services.

Worse still, the Government has still not said whether it will keep funding our existing bus services from April.

If it doesn't, then without this subsidy, bus services across the county (including here in Somerset) could "fall off the side of the cliff" (as said by Wera Hobhouse, Bath MP). It's been estimated 30% of bus services would go. Some bus services could even disappear completely.

Without this Covid Bus Recovery Grant, a leading bus operator has said, "The bus sector is hurtling towards disaster."

So what can we do?

Could you please ... today ... send an email (doesn't need to be long) to the Government Buses Minister demanding that the Covid-19 Bus Recovery Grant funding is continued beyond April. Send it to BARONESS VERA OF NORBITON (Buses Minister) - email verec@parliament.uk

Also copy your email to your MP:

- David Warburton
(Somerton and Frome) - email david.warburton.mp@parliament.uk

Please also copy in Somerset Bus Partnership to any emails too. Our email address: somersetbuspartnership@gmail.com

Additionally, if you should speak to any of the candidates for the Somerset Unitary Council May 5th elections, please ask them what their plans are to protect and improve our bus services here in Somerset. There's never been a time when our bus services in Somerset have been at so much risk. Somerset Bus Partnership Team
www.somersetbuspartnership.co.uk

Kilmersdon Bridge Club



A friendly group of bridge players who meet on Monday afternoons at 2 pm in Kilmersdon's Coles Garden Meeting Rooms is eager to boost its membership. The club plays mostly Rubber Bridge and partners are not necessary, so if you are interested in joining and would like more details please contact: Mike Helton on 07552719324/ mike.henton@talktalk.net or Heather Langridge on 01761232189/ handr82@icloud.com.

Dear Friends

It has been a great pleasure to be out and about in Kilmersdon over the last few weeks, and to be able to visit people. I have now had the privilege of taking the funerals of Bryan Dunbar at St Margaret's Babington and Beryl Riddle at Haycombe Crematorium. There is one wedding booked for this year in St Peter and St Paul, as well as one for next year, and also a Christening for Kobe Riddle. Please do get in touch if you would like to book a Christening or wedding in the church. I am also very happy to take a funeral for anyone in either the church or one of the crematoria.

It has been very good to lead an Assembly with the children from Kilmersdon School. Two more are planned for the second half of the term, which are on Zoom.

A **coffee morning** is planned for **23 April** and will be held in the **Kilmersdon church from 10.00 – 12.00**; do please come and join us. You will be warmly welcome.

Something we do as a benefice in Lent is to hold **Lent lunches**. This year they are in Coleford Church Hall (**Fridays 11 March, 18 March and 8 April from 11.30** in aid of Julian House) or Holcombe Village Hall (**Thursdays 24 and 31 March from 12.00** in aid of Christians Against Poverty). You do not need to book – just turn up.

Kilmersdon's '**Engage**' Bible Study group are also planning to run a 5 week Lent course called '*Nothing More and Nothing Less*', based on the film '*I, DANIEL BLAKE*' which was written by Paul Laverty and directed by Paul Laverty.



based Ken Loach. The course is based around 5 weekly group sessions, looking at Systems of Oppression - Staying Human - Compassion in the Darkness - Fighting Back or Giving In - and The Suffering Servant. Please contact Rosie Kane (01761 439062) or Penny Hutton (01761 435193) if you would like more information.

Looking ahead to the Platinum Jubilee, there will be a special church service to celebrate the Queen's reign of seventy years on **Sunday 5 June at 11.15**. There will be lots of pictures of the reign and some rousing hymns. We would love you to join us for this event.

This comes with love and every blessing,
*Rev'd Clarissa Cridland, Priest-in-Charge,
East Mendip Trinity.*
clarissacridland@hotmail.co.uk
01373 812705
www.eastmendiptrinity.co.uk
www.facebook.com/eastmendiptrinity

Can you help?

Kilmersdon church is looking for someone to help us by taking on the job of **treasurer**. If you feel you could offer to help, please get in touch directly with Clarissa.

clarissacridland@hotmail.co.uk



Flower of the month - Lesser Celandine

Found in woods and hedge banks and liking damp grassy places Lesser Celandine, *Ranunculus ficaria*, is a most sprightly little plant. It is low growing with bright glossy leaves and shiny star shaped yellow flowers which are a welcome sign of spring. But these are strange times, primroses have been in flower in my garden since new year and at the time of writing in late February the bluebell shoots in the woods behind us are already over six inches high. Yet I have seen no sign of Lesser Celandine flowers, which usually appear from late February through to May. More than 200 years ago Gilbert White noted their first flowers around Selbourne on 21st

February. Spring is supposedly getting earlier, but not if you're a celandine it seems.

The roots of Lesser Celandine are a curious clump of tiny tubers and, depending on your point of view, if you are lucky or unlucky enough to have the plant in your garden you will know that it is extremely difficult to get rid of. If you leave just one of these tubers in the soil it will grow into a new plant, and they have a nasty habit of dropping off and landing unnoticed on the soil whenever you did up a clump! However, I forgive them, they are such a cheerful sight. *Julie Palmer*



Kilmerston Cryptic 5

By Phil Preen

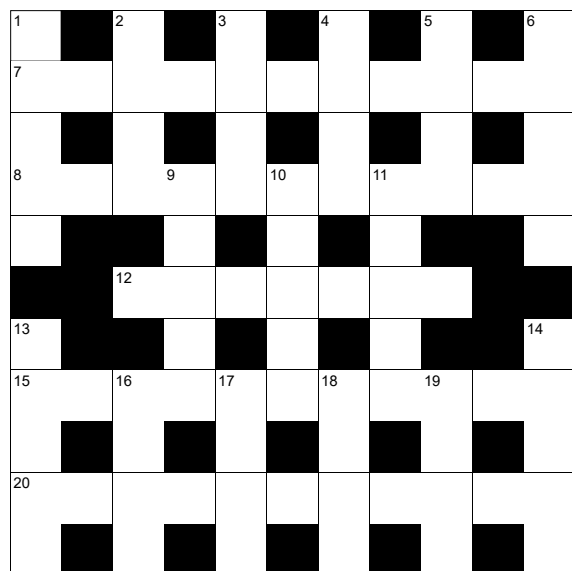
<https://tinyurl.com/PP-KilmerstonCryptic-5>

ACROSS

- 7 Does a MDMA, as cardio ad hoc regularly produces complete lack of animation (4,2,1,4)
- 8 Snivelling heard endlessly having snatched baby's first furry animal (7,4)
- 12 People from Al Jazeera quietly alter the Arabic references in some introductions (7)
- 15 Insect's drug container? (11)
- 20 Blown pipe again - ok, sound or not? (1,3,2,1,4)

DOWN

- 1 Saw first computer programmer with Turing and Babbage's terminals (5)
- 2 Publication with one to three wise men (4)
- 3 Top rock band following Yes in Germany making music (4)
- 4 Part of Ottawa vying for curling (4)
- 5 Designed to meet the needs of the last head (4)
- 6 Poet takes duck for meals (5)
- 9 Enthusiasms for unknown stamp with the head at the bottom(5)



- 10 Cary Grant originally lost every one individually (5)
- 11 Low character's balloon (5)
- 13 Fluttering around garage but not a moth (5)
- 14 Groom me (5)
- 16 Line 6a returns (4)
- 17 Fit costume (4)
- 18 Gem's old friend (4)
- 19 Personal waste left where water gathers (4)

Answers to previous puzzle: Across: 1 JETSAM, 7 AMIGO, 8 SILVER, 9 SPEAR, 11 MANOR, 12 COLES, 14 TIARA, 17 CHURCH, 18 AGENT, 19 SETTLE. Down: 2 EVITA, 3 SAVIOUR, 4 MARS, 5 MINE, 6 HOARES, 10 PRODUCT, 11 MRTOAD, 13 EXCEL, 15 AMES, 16 ACTS.

If you want to sneak a peek at the answers you can follow the link and click the Reveal option.
<http://bit.ly/KilmerstonCryptic>

What's on at Ammerdown?

Visit to the Hindu Temple in Bath

Meet at Ammerdown for 2pm, return at 5pm.
Meet our Hindu Neighbours and observe or join in the celebration of Holi, the Spring Festival.



Caring for Creation Zoom

10am - 11am
Suggested Donation £5
Sharing ideas with people who are working individually and with their local communities at grassroot level.
Email admin@ammerdown.org for the Zoom link.

TLC Days for the Retired

Please arrive by 10am, day ends at 2pm.
£15

Judy Duffus will talk about keeping bees throughout the year and the honey harvest.



Poetry, Protest and Witness in uncertain times

- Ambrose Musiyiwa
Please arrive by 10am, day ends at 2pm.
All you need is a passion for justice and an interest in sharing your views through creativity. Black Lives Matter: Poems for a New World.

Book Club

Rev Narinder Tegally
Please arrive by 3pm, course ends at 4:30pm.
We continue exploring South African writings with Nelson Mandela's: 'The Long Walk to Freedom'.

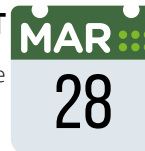


Spring Break

- Gwyneth Evans and Lynn Douglas
£575
This break is especially designed for those who are retired and looking for an accessible place to rest, recuperate and recharge.

CUPPA AND A CHAT

2pm - 4pm
Join us for a cup of steaming hot tea or coffee and a slice of delicious homemade cake every last Monday of the Month.



An Introduction to Tibetan Buddhism

Alison Murdoch
9:30am for 10am - 4pm
£55
We will explore together the three principal aspects of Tibetan Buddhism.

The Ammerdown Centre,
Ammerdown Park,
BA3 5SW



admin@ammerdown.org
01761 433709

A Little Guidance on Finding Our Way Through The Peaks and Valleys of Life



This month: 'Coping Strategies to Help Us Thrive'

And here we are, Christmas and New Year well past and the rebirth of Spring a ways away. A time that can, what with the low temperatures, short grey days and extended periods

of time spent indoors, nudge you towards the doldrums. If that's you, then it's a great time to put a few coping strategies in place to help lift you through the next few weeks, onwards and upwards towards that lovely last weekend of March, when the clocks change and the warmth of the sun begins to caress the skin again.

One of the simplest and most direct ways of starting to create those strategies, is to be present with and reflect on how our body (what I call the vehicle that carries us) is responding to different choices we make; through the foods we eat, the liquids we drink, the exercise we do and the sleep we take.

What are you doing that serves your body? What are you doing that doesn't? What is your body telling you? Is it responding with a 'yes please', a 'no thanks', or somewhere in between?

Ultimately the goal is to understand and act on what you can add to or take away from your 'body habits', to tune 'your vehicle' and enjoy more of the ride - a great little strategy to help cope with the darker moments as you move back into the light.

Love, plh

Patrick, a local resident of Kilmersdon is An Actor, Teacher, Author of *'The Ultimate Power of You'*, *'A guide to Honouring Your Time'* and co-host of The Radio Show and Podcast - *'Living Beyond Fear'* at Frome FM.

If you'd like to drop him a line, please do so at - info@theultimatepowerofyou.com

Spotlight on Coles Garden Meeting Rooms



If you are looking for a venue for an event, Kilmersdon's Coles Garden Meeting Rooms might be just the place. Set in a quiet residential location, it is just across the road from the larger Kilmersdon Village Hall and its car park. Upstairs can accommodate 40 people and is ideal for small family celebrations, group meetings and one to one tuition or consultation. Downstairs is a kitchen, toilet facilities and a craft room, suitable for smaller events or as an extension/ preparation room for upstairs activities. Cherry Gilham, caretaker and bookings manager, will be happy to give more information and to show you around and can be contacted on 01761 436767. Further info can also be found on the Kilmersdon Village and Mendip District Council websites

Welcome to Kilmersdon

We would like to give warm a welcome to Adrian O'Brien and Andrew Hunt, who moved into Orange Farm, Coles Garden, at the end of January. They have come from London, where they both work in the film and television business. They are already members of Babington, so have several friends in the area. We hope that they will soon feel welcomed and at home in our village, and maybe decide to join in some of the clubs and events.

Kilmersdon Gardeners

Spring 2022

The Gardeners were inspired in a presentation by Helena Crouch to take an interest in the plants found in a range of wild local habitats in the Cam and Wellow Valleys. Helena has a long involvement with the Cam Valley Wildlife Group leading Botany Walks in the summer between April and September. The group has mapped the flora of the Cam and Wellow Valleys in kilometre squares. Unsurprisingly nettles are found in every square along with some other familiar species like hogweed, creeping buttercup, ground ivy, coltsfoot and ash trees. There are other plants like Bath Asparagus that are special to the area and have a more limited distribution.

The valleys have four areas of established woodland: Greyfield Wood, Chewton Wood, Cleves Wood and Ammerdown. These woods allow some access or have public footpaths from which bluebells can be enjoyed in the spring. 75% of all bluebells occur in Britain. The woodlands include indicators of ancient woodland like Solomon's Seal and Herb Paris. There are also several species of orchids.

There is a range of grassland habitats with common species including Birds Foot Trefoil, Cowslips, Milkwort, many species of orchids and Yellow Rattle a parasitic plant that is beneficial to grassland. There are quite a number of post-industrial sites in the area. Plants like Blue Fleabane colonise disused railway tracks and spoil tips such as New Rock Batch has been colonised by the rare Bythian Vetch and a variety of ferns like Wall Rue, Maidenhair and Black Spleenwort and. Arable farmland creates more open habitats that have displays of Poppies, Sparges and Chamomile. Seeds are cleaner today so there are fewer wild flowers or weeds in crops that in the past.

There are not many aquatic habitats in the area with steep sided stony stream beds, there are few ponds and waterways. Unfortunately, invasive species like New Zealand Pygmyweed can come in on new plants and choke ponds. Himalayan Balsam has spread widely through damp areas in the last 20 years. Buddleia Davidi 'the butterfly tree' is also an introduced species that has gone wild and is common in drier areas, something of a 'Marmite' species.

In February the Gardeners held their AGM and a Gardening Quiz. This is a time for membership renewal or for new members to join. We would

welcome anyone interested in plants and gardening you will be made very welcome if you would like to drop in for a single meeting as a visitor, or join us. There are refreshments and raffles at all our meetings.

Planned Events at Kilmersdon Village Hall:
Wednesday March 9th at 7.30pm – Talk by Derek Dexter *'Fuchsias My Way'*

Wednesday April 12th at 7.30pm – Talk by David Usher *'The Answer Lies in the Soil'*

PLANT SALE after two fallow years is definitely a date for the diary: **Saturday May 14th** – 10.30am – 12.30pm

In memory of Beryl Riddle



Beryl, who sadly died on 26th January, was a well-known and much respected resident of Kilmersdon, living here for most of her life, along with her family. It remained a place close to her heart. One of her greatest passions was cooking, which led to her choice of career, working as a cook at Ammerdown Study Centre for nearly 40 years, before retiring in order to spend more time with her husband, Ray and the family. She was a very kind and caring person, so made many friends with both the staff and visitors, some of which she kept in contact with to the end of her life. She was also very family orientated, and loved nothing more than be surrounded by them. She leaves behind her 5 children, her sister, 11 grandchildren and also her 5 great-grandchildren, all of whom adored her. She will be greatly missed by all of them and has left a massive hole in their lives and hearts.
The Riddle Family

KILMERSDON PARISH PRECEPT 2022/23

In 2021/22 the Parish Council precept was £15,821, equating to £67.13 for a Band D Property. For 2022/23 the precept has been set at £20,493, equating to £86.71 per Band D Property. The requirement to budget £5,000 for the May 2022 election prompted the increase in the precept.

What services does the Parish Council offer?

The Parish Council is a statutory consultee on planning applications and provides a local voice on highways and environmental matters. The play area adjacent to the Village Hall comes under its remit, as does the Village Hall car park. It supports the parish environment by paying for the street lighting at the Village Hall car park, grass cutting of the playing field. The Parish Council maintains some of the benches in the parish.

How did the Parish Council perform last year?

The Parish Council was pleased to support a number of local organisations through grant provision, amongst them the Parish Church, the Parish magazine, Mendip Community Transport, the Village Shop Committee, training for the village defibrillator and the Citizens Advice Mendip.

The Parish Council lobbied its County Councillors to improve the safety of the B3139 through Kilmersdon through liaison with its County Councillor and Somerset Highways Officers.

In the autumn the fingerpost at Charlton, which had sunk into a sad state of repair, was fully renovated.

Thank you to the volunteers who maintained the spiral garden at the Village Hall this year and

kept it looking lovely for all to enjoy.

The much-loved play park is still suffering from rot on the wooden beams. During the year the zip wire was replaced with a longer version thanks to a grant from Awards for All. A grant from the Sperring Trust plus Crowd Funding enabled the replacement of the wooden train with a bright red alternative and a new trim trail.

The condition of the swings is being examined by an engineer because of their age and depending on the outcome, this might be the next item for replacement.

The beautiful Silver Birch in the play park had a crown lift in the summer and the bench underneath was repaired.

As ever, grateful thanks go to the small but active team of local people who undertake weekly checks of the play park by turn throughout the year. It is such valuable work and gives the Parish Council advance warning of deterioration of the equipment. If you can help lighten the load and join this team, please contact the Parish Clerk.

What is new for the next financial year?

The Parish Council plans to continue its programme of renovating the fingerposts and has budgeted for another to be done in the forthcoming year.

Raising funds to continue to keep the play area safe, bright and enjoyable for children continues to be a priority.

The Parish Council is working to represent the people of Kilmersdon and make decisions in the best interests of the village. We welcome your views and input. **Kilmersdon Parish Council**
clerk@kilmersdonpc.co.uk

PARISH COUNCIL NEWS

Kilmersdon Neighbourhood Plan

Are you interested in learning more about Kilmersdon and shaping its future? If so, the Kilmersdon Neighbourhood Plan might be the place to get involved. You do not need any particular experience, just some enthusiasm for seeing a change for the better. Please contact the Parish Clerk for more information –
clerk@kilmersdonpc.co.uk

Kilmersdon Village Signs

At last it is good to see the replacement of the Kilmersdon Village Signs. Thank you to everyone who campaigned for the new signs.

Parish Council elections

It has been confirmed that the Parish Council elections will be held in May 2022. If you are interested in becoming a Parish Councillor and would like some more information about what this entails, please contact the Parish Clerk, Lesley Close – clerk@kilmersdonpc.co.uk

Kilmersdon Play Park

A wonderful group of people take a month each to undertake weekly visual checks of the play park. They complete a simple one page checklist which they email to the Parish Clerk. Would you like to help to keep the play park safe? Please contact the Clerk –
clerk@kilmersdonpc.co.uk

2022 meeting dates of the Parish Council

The Parish Council meets at the lovely Coles Garden Meeting Room once a month. The list of 2022 meeting dates is on the Parish Noticeboard and also the website www.kilmersdonpc.co.uk. The next meetings of the **Parish Council are at 7.30pm on 21st March and 19th April**, Covid restrictions allowing. You are very welcome to attend and talk to the Parish Council in the public comments section.

VILLAGE GROUPS

KILMERSDON ART GROUP
Roz Wilkinson 01761 434452

KMR BRIDGE CLUB
Mike Henton 07552 719324
mike.henton@talktalk.net

KILMERSDON VILLAGE HALL
Danielle Forrester 07527 693937
managerkilmersdonhall@outlook.com

Coles Garden Meeting Room
Cherry Gilham 01761 436767
www.kilmersdonmeetingroom.org

KILMERSDON FACEBOOK
www.facebook.com/Kilmersdon

KILMERSDON VILLAGE DAY
enquiries: kilmersdonvillageday@gmail.com
www.kilmersdonvillageday.org

KILMERSDON C of E VA SCHOOL
Head Teacher Stephen Bamford 01761 432283

KILMERSDON GARDENERS
Chairman Judith Stanford 01761 233045
www.kilmersdongardeners.org

KILMERSDON VILLAGE HALL DRAW
Martin & Shayne Gibbs 01761 432574

KILMERSDON VILLAGE SHOP
John Clayton 07974 440468
john.clayton@outlook.com

PARISH COUNCIL CLERK
Lesley Close 07521 951471

PARISH COUNCIL WEBSITE
www.kilmersdonpc.co.uk

PARISH PATH LIASION OFFICER
Stuart Green 07753 904 678

PARISH NEWS EDITOR
Sue Meadows 01761 437855
E: suedmeadows@gmail.com
Penny Hutton 01761 435193
pennyhutton.ph@gmail.com

WOMENS INSTITUTE
President - Julie Roberts 01373 834451
Email: Bertrose@hotmail.co.uk



Nic Edwards
Tel: 01823 331222
Email: nicolae@somersetcc.org.uk
Check out the CCS Village & Community Agents website
www.somersetagents.org
or the CCS website:
www.ccslovesomerset.org

**DANIEL HURLE
PLASTERING**



- GENERAL PLASTERING
- SKIMMING • RENDERING
- DRY LINING

07849 717702 danielhurle@sky.com

NORTON GARDEN MACHINERY

SALES - SERVICE - SPARES
SPECIALIST GARDEN MACHINERY SERVICES



For the best price and service, contact the specialists. Telephone 01761 435353.

THE OLD GARAGE, KILMERSDON, BA3 5TD

Fosseway Press



Supplying print and stationery since 1968.

PAPER • CARDS • LABELS • GIFTS • RUBBER STAMPS
DRAW TICKETS • BINDING • LAMINATING AND MORE!

KILMERSDON PARISH NEWS IS PRINTED BY FOSSEWAY PRESS
7 Frome Road, Radstock. BA3 3PT.
Tel: 01761 431919 Email: fossewaypress@btconnect.com Web: www.fossewaypress.com



Need Legal Advice?



Check out our Virtual Legal Surgery at th-law.co.uk or call us on 01761 414646.

Quality legal advice on a range of matters, without you leaving the comfort of your own home.

th-law.co.uk
01761 414 646
enquiries@th-law.co.uk

TH
Thatcher + Hallam Solicitors

DEANAJAMIESON

PEST CONTROL & PREVENTION

Effective pest control solutions
from a mouse in a kitchen to a wasp nest in a shed,
from a squirrel in an attic to implementing a
Pest Management Scheme for commercial premises.

Offering Domestic & Commercial Services
Rats • Mice • Moles • Squirrels • Wasps
Ants • Flies • Moths • and more...

Qualified in RSPH Level 2 Pest Management

Contact me today to attend to any pests you have or to discuss your requirements

Tel: 01761 751 296 Mobile: 07751 722 562
Email: deanajamieson.pestcontrol@gmail.com
www.deanajamiesonpestcontrol.co.uk
Deana Jamieson Pest Control

She's the best at controlling the pests!

OUR PRODUCTS CAN HELP WITH STRESS & ANXIETY | ACHES & PAINS | IMMUNE SUPPORT | SLEEP | MENOPAUSE

HAPPY Mother's Day



RUNNING ON HEMPT

Browse our beautiful gifts online or instore or if choosing is hard, there's always gift vouchers!

WWW.HEMPTYONLINE.CO.UK



T. 07745 016 277 EMMA@HEMPTYONLINE.CO.UK 9 FORTESCUE ROAD, RADSTOCK BA3 3PJ

**TRUSTED RESIDENTIAL AND COMMERCIAL GLAZERS
WITH OVER 35 YEARS EXPERIENCE**



Aluminium specialists with in-house design, fabrication and fitting teams

Windows - Doors - Specialist Glazing - Conservatories - Orangeries
Shop Fronts - Commercial Glazing - Secondary Glazing


Tel. 01761 417654 www.techniglaze.co.uk
Units 1-6 Fourth Avenue Westfield Trading Estate, Midsomer Norton, Bath BA3 4XE



S.G. TAYLOR.
WATCH & CLOCKMAKERS
SPECIALIST REPAIRERS and
RESTORERS of WATCHES
& JEWELLERY

Delivery and Collection
All your work guaranteed
Insurance valuation undertaken

Established 1932 High Street, Paulton.
01761 412389



Docky's Delicatessen

Sandwiches • Baguettes
Antipasti • Salads
Cured Meats • Cheese

Absolutely delicious buffets
01761 419944 - Midsomer Norton

BESPOKE DESIGN SERVICE

Looking for beautiful wedding or party invitations,
personalised artworks or perhaps
a logo or branding for your new business?

Give me a ring to chat
through your design needs.
Lisa Ferron 07565 333268.

0 IS FOR OTTER



JANE LANGLEY PILATES

VIRTUAL CLASSES AND 1-1 AVAILABLE SO YOU CAN PARTICIPATE FROM ANYWHERE!

Maintain and increase mobility, strength, muscle tone,
balance, flexibility. Rehab after an injury. Focus your
mind and breath to create a sense of wellbeing.

0777 355 3327 janeslangley@hotmail.com
JaneLangleyPilates@facebook.com

REGULAR CLASSES: NUNNEY MON 9.30/10.30 AND NORTH BRADLEY 5/6PM.
HOLCOMBE WED 9.30/10.30 THURS 8.10PM PUREMOVES
** KILMERSDON TUESDAY MORNINGS ** GET IN TOUCH

ENJOY MOVING WELL - Pilates is suitable for all ages and abilities



BRYAN G. BISHOP
Family Funeral Director & Memorials

PRIVATE CHAPEL OF REST
24 hour personal service

We are pleased to offer GOLDEN CHARTER
Pre-paid funeral plans as part of our service.

Paulton & Radstock and surrounding areas
01761 412046
www.bryangbishop.co.uk




**POLICE COMMUNITY
SUPPORT OFFICER**

PCSO 9011 RUSSELL FORD
RURAL BEAT MANAGER FROME NORTH, AVON & SOMERSET

Russell.Ford@avonandsomerset.police.uk
Phone 07547658018
www.avonandsomerset.police.uk

101 NON-EMERGENCY NUMBER
In the event of an EMERGENCY requiring
POLICE ATTENTION PLEASE dial 999

**VOLUNTEER VISITING
SERVICE**

Do you know someone who is visually impaired and
would benefit from Somerset Sight's Volunteer
Befriending Service?

We are a long established charity supporting people with
sight loss. Our befriending service provides fully trained
and checked volunteers who visit sight impaired people
on a regular basis to provide company and support.
The ongoing help and friendship of a volunteer can make
a lasting difference to a person's quality of life.

For more information, please contact Somerset Sight on
01823 333818

**Somerset
Sight** Working with people
who lack sight, not vision



The Most Thorough Cleaning You've Ever Seen Or Its Free!!

Carpets Advanced Low Moisture System.
Superb results and **dry in as little as 30mins!**
Your neighbours will think you've got new.

Upholstery Fabric and leather upholstery
can look like new and smell fresh again.

Oriental & Area Rugs Off site cleaning
facility for superior results. **Free Collection &
Delivery.**

Hard Flooring Restorative
Cleaning and sealing of natural
Stone, Ceramic & Porcelain Tiles
& Grout, Wood, Vinyl etc.

Re-polishing of
limestone, travertine and marble
flooring and worktops.



What We Give Others Can't

- * **Value For Money** — You get what you pay for. We may not be cheapest, (**we won't use the tricks necessary to be so!**)
- * **Accurate Appointment Times**
No more waiting around! 10 or more mins late, we ring ahead.
- * **100% Money Back Guarantee** We are not perfect! If a spot re-appears or you're unhappy, we'll return and re-clean free. If you are still unhappy, your payment will not be accepted.

Free, Friendly Advice
TLC (Bath) Ltd, Unit 33,
Old Mills, Paulton BS39 7SU
info@tlcbath.co.uk

**01761
235600**

**Somerset
WORKWEAR**

**NEW SAFETY
BOOT RANGE**

**YOUR LOCAL
WORKWEAR
SUPPLIER**

WORKWEAR · FOOTWEAR · IN-HOUSE EMBROIDERY

WWW.SOMERSETWORKWEAR.COM

Units 6 & 12 First Avenue · Westfield Industrial Estate · Radstock · BA3 4BS 01761 233230



WHAT'S IMPORTANT TO YOU IS IMPORTANT TO US

At NFU Mutual we can look after you, your family and your business.

Our insurance products and financial planning services include:

- Home
- Car
- Business
- Farm
- Equine
- Property Owners
- Income Protection
- Financial Planning
- Pensions

NFU Mutual Financial Advisers advise on NFU Mutual products and selected products from specialist providers. When you get in touch we'll explain the advice services offered and the charges. Financial advice is provided by NFU Mutual Select Investments Limited.

For a real conversation about your needs call us or pop in
NFU Mutual, The Old Stables, Manor Courtyard, Stratton on the Fosse, Bath,
BA3 4QF
Tel: 01761 239382



NFU Mutual

INSURANCE | PENSIONS | INVESTMENTS

A P R Smith & H G Wareham is an appointed representative of The National Farmers Union Mutual Insurance Society Limited (No. 111982). And an introducer to NFU Mutual Select Investments Limited, a member of the NFU Mutual group of companies.